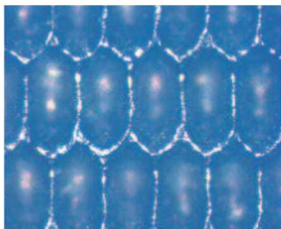




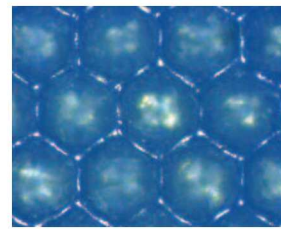
ANILOX



EFLO[™]



THERMAFLO[™]



- Ceramic Anilox Rolls
- Ceramic Anilox Sleeves
- Chrome Anilox Rolls
- Glue & Metering Rolls
- Coating Rolls

- Mechanical Repairs
- Re-Engraves
- Anilox Audits
- Anilox Cleaning and Supplies
- Technical Advice and Training

www.pamarco.com



CARE®

For Your Anilox



MAINTAIN OPTIMUM CELL VOLUME PREVENTATIVE MAINTENANCE RATHER THAN COSTLY CURE!

Anilox rolls should be cleaned immediately after use. Never allow ink to dry in cells. The Care® range of cleaning solutions are the only cleaning solutions we recommend for cleaning your anilox rolls. Designed and formulated specifically for the printing industry with safe Ph levels to protect your anilox and prevent corrosion.



To reduce damage to your anilox rolls & sleeves, use our anilox covers to protect them when not in use.



www.pamarco.com