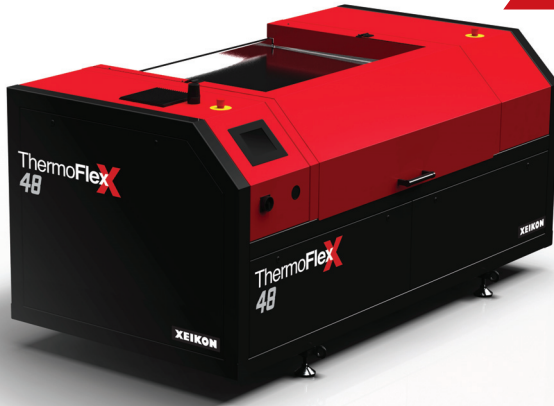


ThermoFlex 48



The ThermoFlexX 48 with its maximum plate size of 900x1200 mm (35x30") is the perfect fit for the medium web segment. It's an excellent choice for label & flexible packaging printers who want their own productive imager and to remain independent whilst making plates in the shortest possible time. ThermoFlexX 48 is an ideal size to fit easily into available space with realistic costs for plate processing equipment and digital workflow.

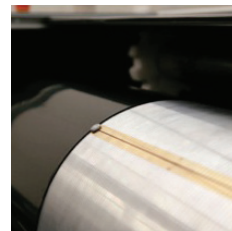
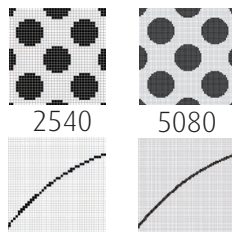
Today packaging and pre-press is very straightforward. Why not make you own digital plates in-house?

High Quality imaging

The fiber laser is today's best technology for digital imaging, offering superior quality. The robustly designed ThermoFlexX is made out of heavy duty industrial components, which makes high speeds possible without fluctuations and vibrations. This offers accurate and consistent imaging quality.

High Resolution

- With 5080dpi resolution, we push the quality standards to a higher level.
- smaller screen dots & finer details
 - sharper text and line-work
 - full image contrast
 - greater production stability through platemaking and printing

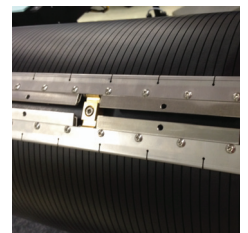


Low plate waste

Clever technical innovations, such as the unique vacuum slider, are based on a clear understanding of the operators' needs for quick and accurate plate handling of plates, while saving time and costs. No more taping for partial plates!

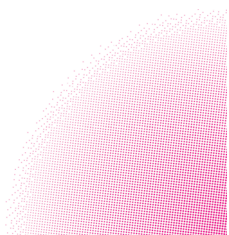
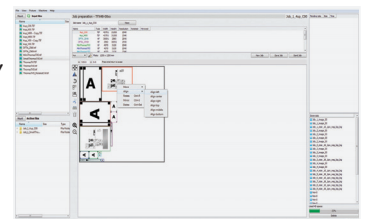
Ease of Use

You can customize your ThermoFlexX to your versatile production needs. With options like the hybrid drum and customized magnet zones and pins, you can handle plates for flexo, letterpress and dry-offset. Also dry film and digital screens for rotary screen printing are possible. The automatic clamp system makes plate loading very easy.



Multiplate

Dedicated front-end software, combining simplicity with functionality, resulting in maximum productivity of your ThermoFlexX.



Innovative screening solutions

The new ThermoFlexX screening technologies offer superb highlights with a smooth transition to 0% tint value, while solids and linework are retaining excellent detail.

Open

The ThermoFlexX imagers excel in their choice of resolution. Any of the industry standards can be used: 2400, 2540, 4000, 4800 or 5080dpi. The ThermoFlexX imagers can be integrated with any workflows or rips which can produce 1 bit TIFF file format. Closed file formats such as LEN-files can be converted to 1 bit TIFF format. Our excellent technology is capable of imaging all hybrid and surface screening technology. ThermoFlexX can image all digital plates, from any brand, solvent and water washable or thermal processing, and is compatible with all plate making equipment.

The choice for ThermoFlexX is a choice for freedom, today and for future investments.



SPECIFICATIONS THERMOFLEXX 48

Laser type	Fiber laser 1064nm	
Laser Power	35 W	50 W
Laser Beams	8	8

Productivity 2540 dpi*	2,5	3,75
Productivity 5080dpi*	1	1,5

* Depending on plate type and quality requirements. Thicker plates are imaged at speed down to 60% of mentioned productivity.

Standard Resolution*	2400	
	2540	
High resolution*	4000	
	4800	
	5080	

*By default one resolution (2400 or 2540dpi) comes with the imager. Additional resolutions are optional

Image Quality	at 2540 dpi : up to 175lpi / at 5080 dpi : up to 250lpi
---------------	---

Hybrid Drum option	
Customised register pins	Optional
Customised magnetic zones	

Loading Table	Top loading table
---------------	-------------------

Clamping system	Automatic
-----------------	-----------

Resolution Change	Manual lens replacement
-------------------	-------------------------

Focus setting	Manual test
---------------	-------------

Plate loading	Manual
---------------	--------

Partial Plate handling	Vacuum Slider
------------------------	---------------

Plate sizes (drum Y x X)	900 x 1200*	920 x 1200*
	35 x 48**	36,2 x 48**

* or smaller in X direction

Plate thickness	0.73 to 6.35 mm 0.029 to 0.25"
-----------------	-----------------------------------

Mountable plate materials	Flexo plates and letterpress plates on polyester base
	Dry Films 0,3mm
	Digital Screens Gallus Screeny
	Optional: Metal back letterpress plates

Applications	Labels
	Flexible Packaging
	Folding Carton

Top & Bottom clamp space	15 mm / 0,6"
--------------------------	--------------

Machine Dimensions	Width: 2650mm / 104"
	Depth: 1400mm / 55"
	Height: 1350mm / 53"

Required Floor space	2900 x 3700 mm 114" x 146"
----------------------	-------------------------------

Weight	2500 kg / 5500 lb
--------	-------------------

Compressed Air	Min. 6 bar - free of oil/condensation
	Compressor not included - 0,5" connection

Electrical connection	Voltage 3x400V (+/-5%), N, PE
	Frequency: 50 Hz -60 Hz
	power consumption: x kVA
	Fuse: 20A

Exhaust & Filter system	External exhaust carbon filter system with carbon filter
-------------------------	--

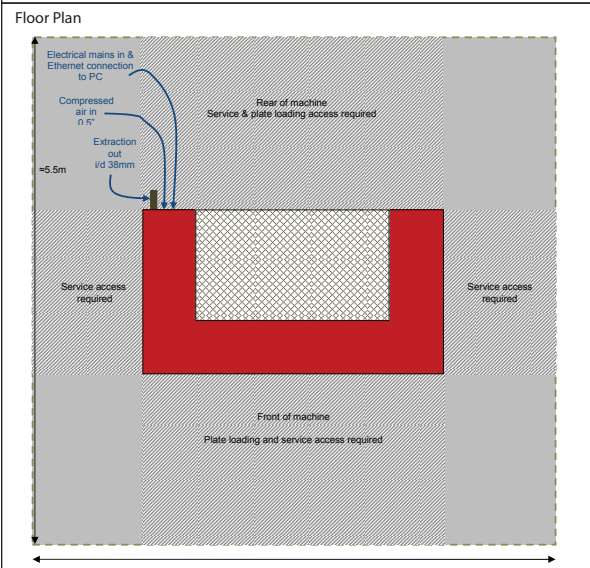
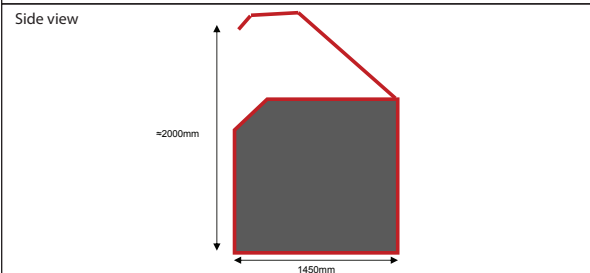
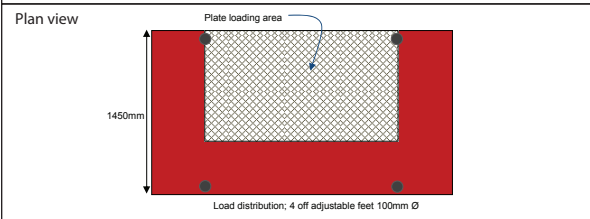
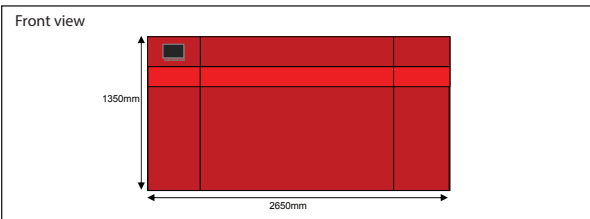
Vacuum system	External vacuum system provided
---------------	---------------------------------

Operating conditions	Humidity max 70%
	Temperature 15-26° / 59-79 F /(+/-2%)

Multiplate Software Platform Specification	Windows 7 Professional Server 64 bit
	3 Ghz Quad Core (4 cores with Hyperthreading)
	16 GB RAM
	DVD ROM / Minimum 1 USB port for Dongle
	Dual 100/1000 Network Interface 1 TB hard disk

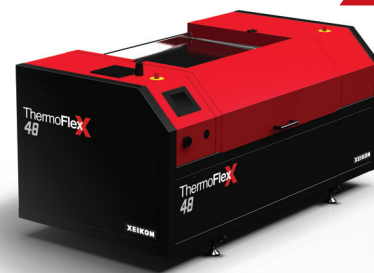
□ Standard □ Optional

The above mentioned specifications are valid from 01-01-2015 and overrule all previous specs. There is no legal commitment towards the specifications, due to ongoing changes of the product.



ThermoFlex

48



V1 01-12-2014

www.thermoflexx.com
info@thermoflexx.com

